

# SCHOPF SFL 100

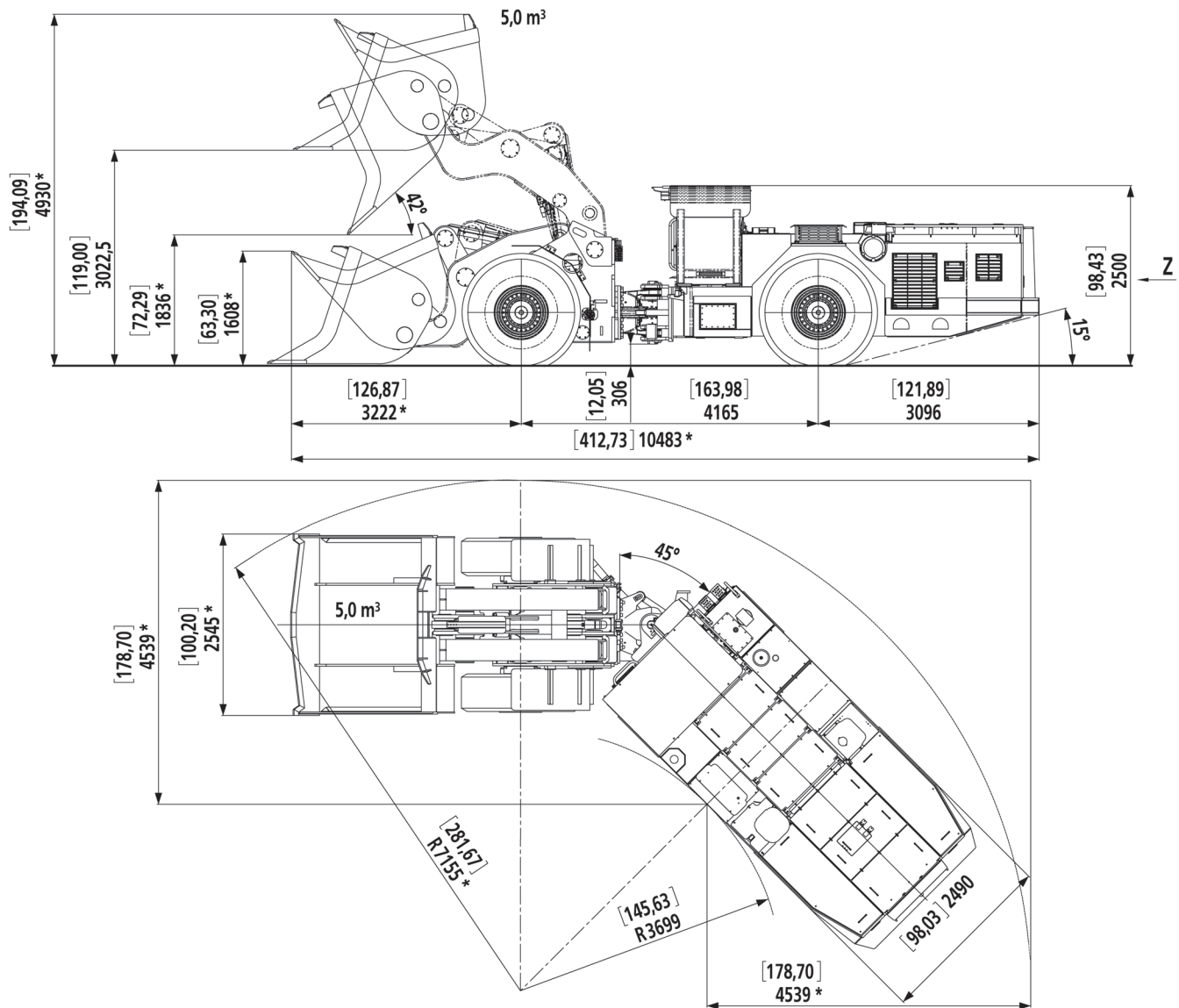
Mining & Tunneling Loader

**SCHOPF**

Loaders. Dump trucks. And more.



# Technical data SCHOPF SFL 100



## General data

■ Tyre size	18.00 x 25, L5
■ Breakout force	195 kN
■ Payload	10,000 kg
■ Bucket (SAE heap.)*	5.0 m³ / 6.5 cyd
■ Oscillation	+/- 10°
■ Articulation	+/- 45°
■ Operating weight	34,300 kg

\*bucket vol. depends on loose weight of material

## Engines

Watercooled, turbocharged and aftercooled Deutz TCD 2013 L6 2V, electronically controlled with monitored engine functions, 200 kW (268 BHP/272 MHP) @ 2,300 rpm or:

Watercooled, turbocharged and aftercooled Cummins QSL9, electronically controlled with monitored engine functions, 209 kW (280 BHP/284 MHP) @ 2,000 rpm each with:

- Silencer
- Two stage dry type airfilter with service gauge
- V-core engine coolers

## Transmission/Torque converter

Clark MHR 36000 series with integrated T/C, 4 speeds forward/reverse

## Axles

Kessler heavy duty D102 with POSISTOP brakes and planetary wheel ends

## Service brake

Single circuit failsafe POSISTOP LCB brakes with individual cooling circuit and separate brake cooling oil tank

## Parking/Emergency brake

Same as service brake, hand operated emergency pump

## Steering system

Hydraulic Orbitrol steering wheel system for precise steering control, heavy duty gear type steering pump

## Working hydraulic system

Single lever pilot controlled bucket and boom functions, heavy duty gear type working pump

## Operators compartment

FOPS/ROPS roof; cushioned, adjustable operators seat; all necessary armatures and controls

## Electric system

- Alternator 24 V / 80 A
- Battery capacity 2 x 12 V / 200 Ah ea
- 5 front lights
- 4 rear lights
- Display for engine functions

## Options

- On request

Tolerance of mentioned data +/- 3%. Specifications subject to change without notice. Drawings and pictures may include options.